

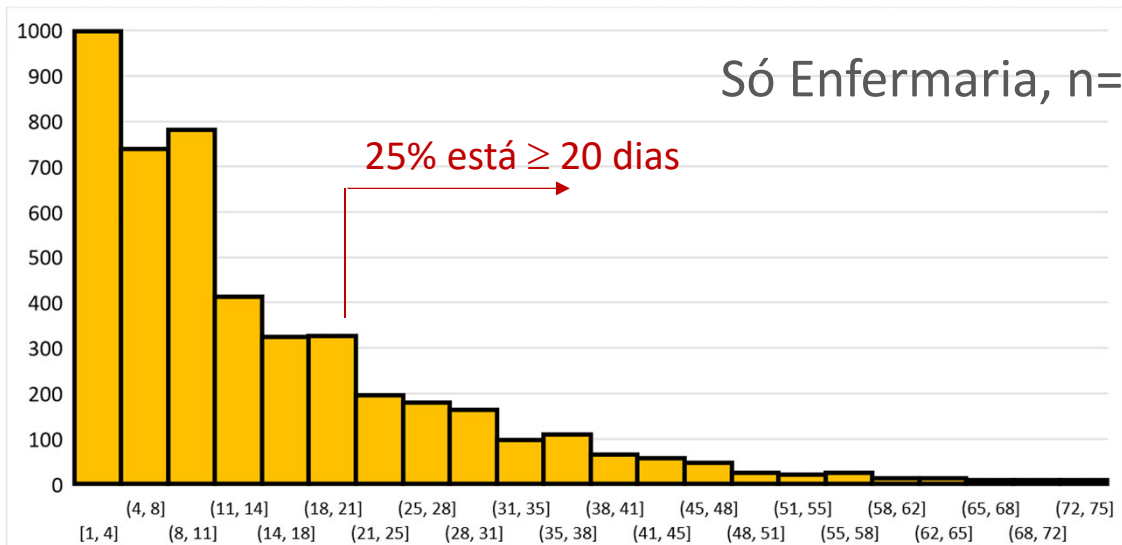
# Tempos de estadia hospitalar dos doentes COVID e projecções para a ocupação hospitalar COVID

8 JULHO 2020

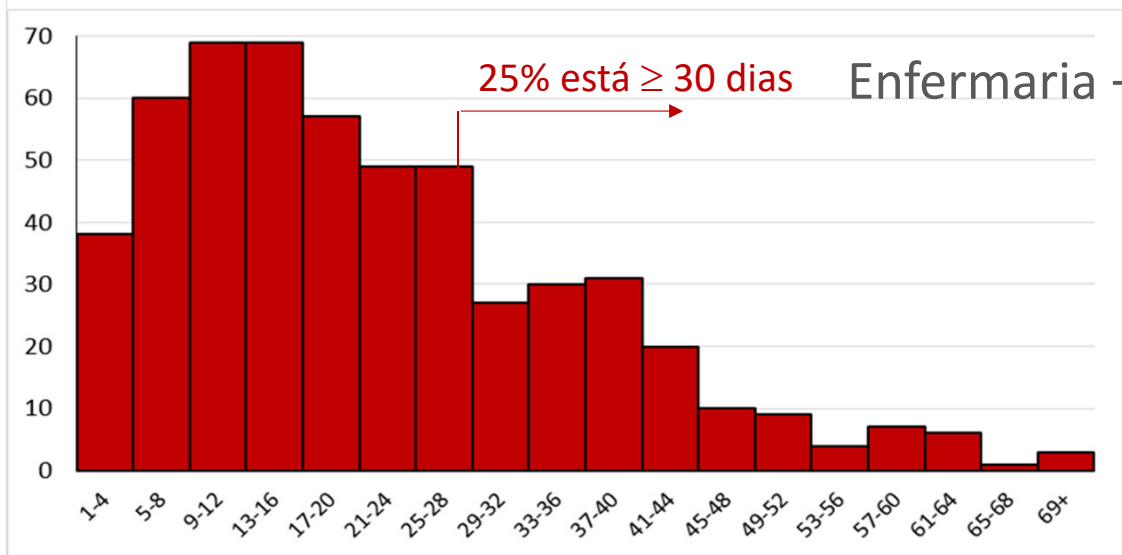
João José F. Gomes  
Manuel Carmo Gomes

Faculdade de Ciências, Univ Lisboa





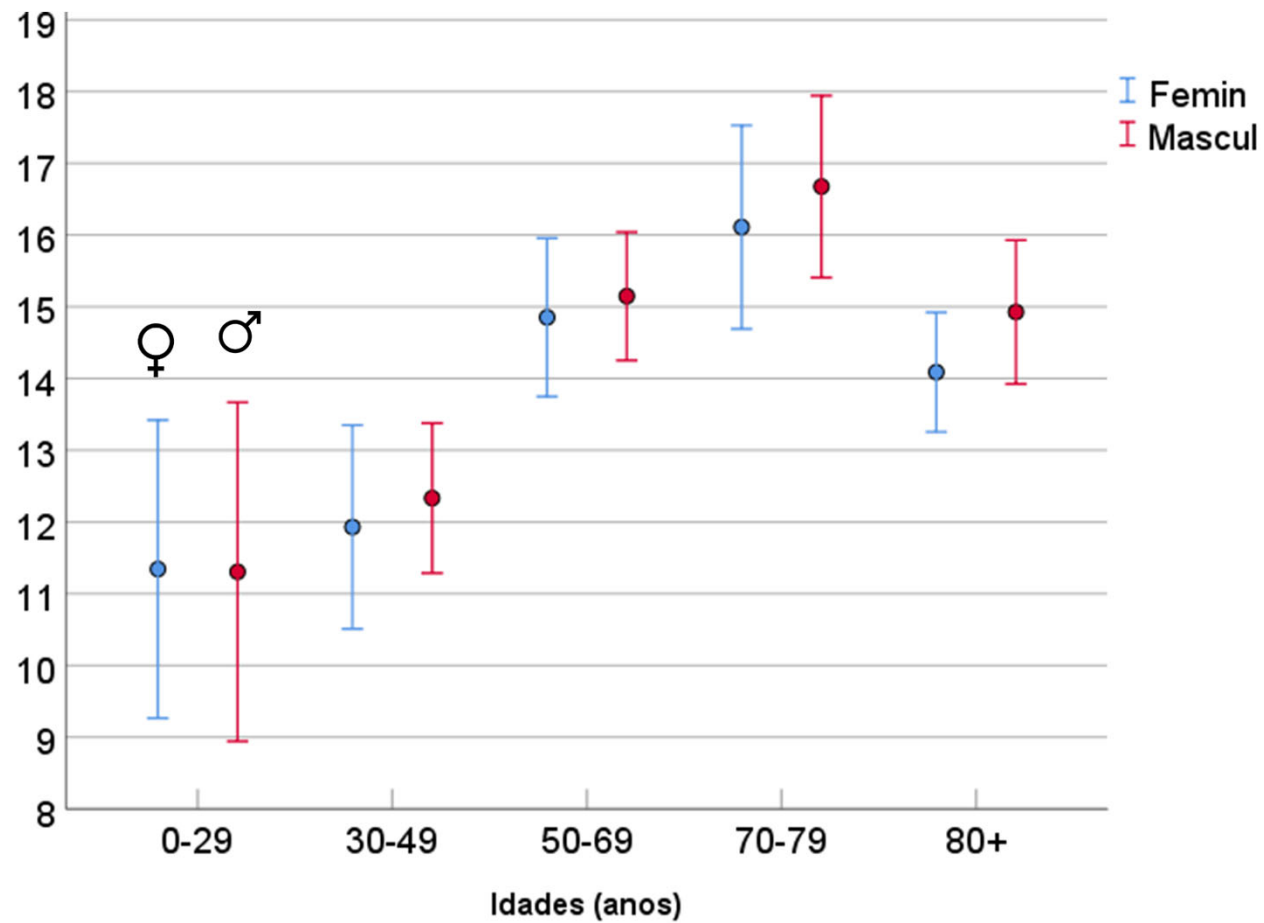
	Mediana (dias)	IQR
Total	<b>10</b>	(5-20)
Homens	<b>11</b>	(6-20)
Mulheres	<b>10</b>	(4-20)



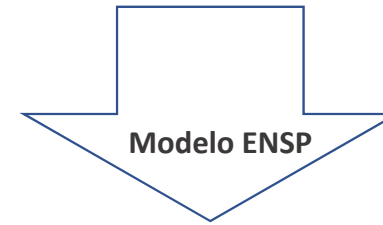
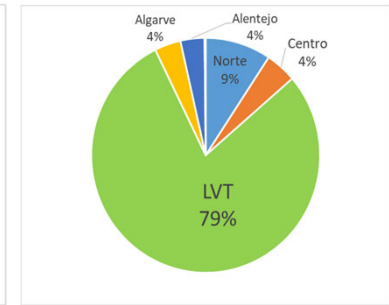
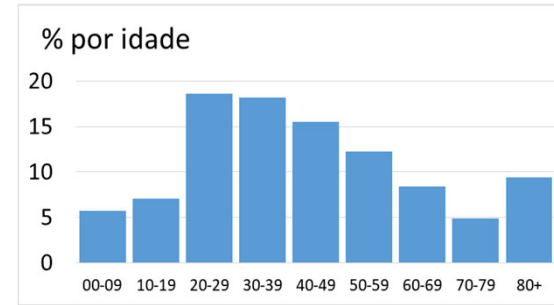
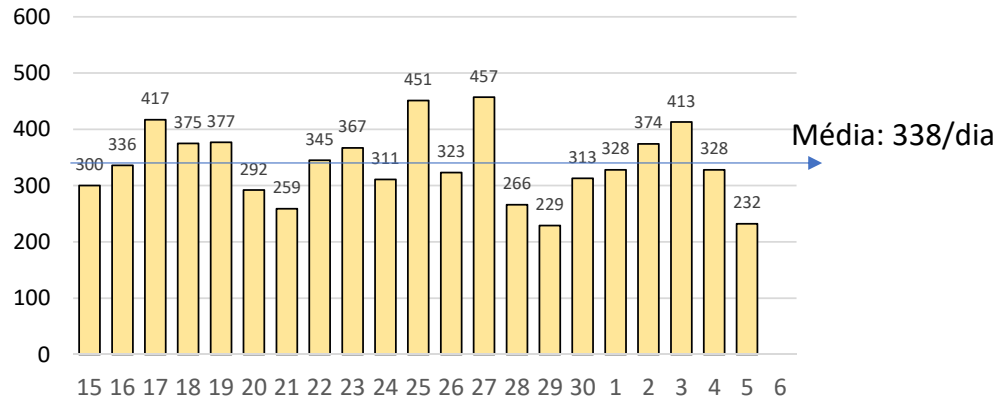
	Mediana (dias)	IQR
Total	<b>19</b>	(11-30)
Homens	<b>19</b>	(11-30)
Mulheres	<b>17,5</b>	(10-31)

Dias de hospitalização

Nº médio de dias em hospital



## Nº novos casos conhecidos desde 15 Junho

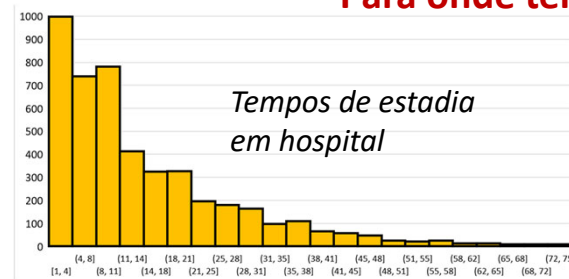


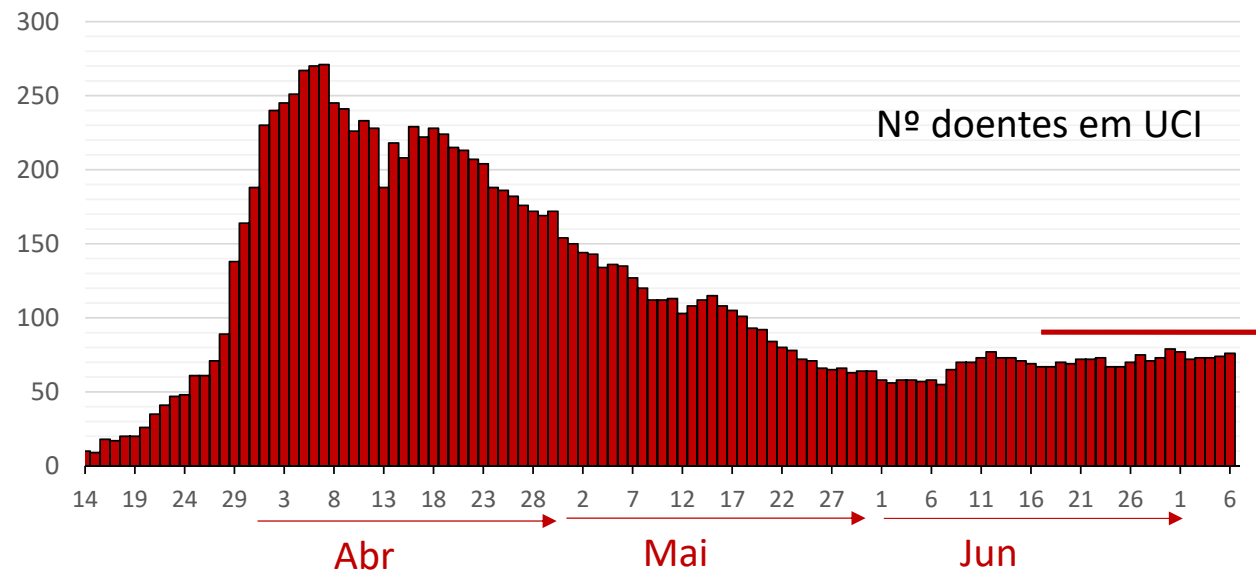
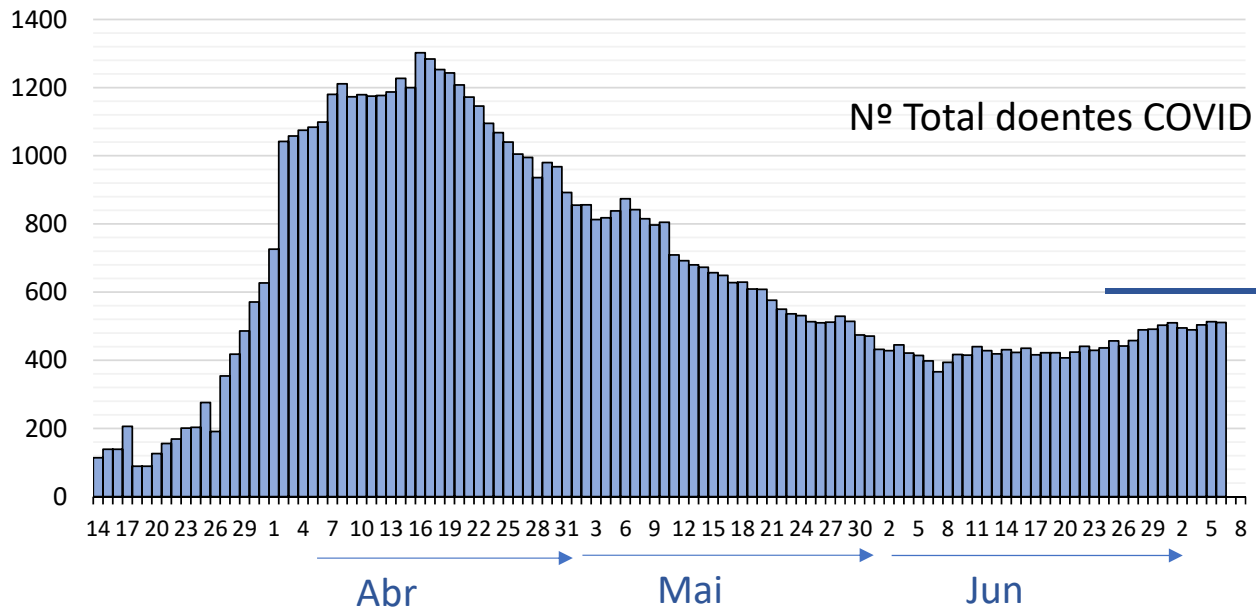
Número médio de internamentos/dia:

**29,1 a 48,9**

**39**

**Para onde tende a ocupação hospitalar?**

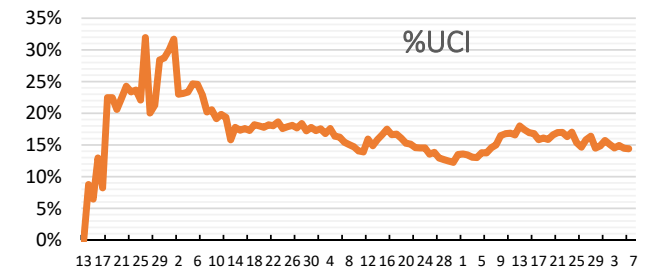
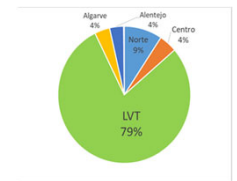




**Se 39 internamentos/dia**

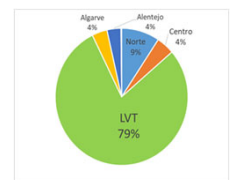
607 (578 – 637) ocupação hospitalar estimada

80% são 486 (462-510)



91 (69 – 76) ocupação de UCI estimada

80% são 73 (462-510)



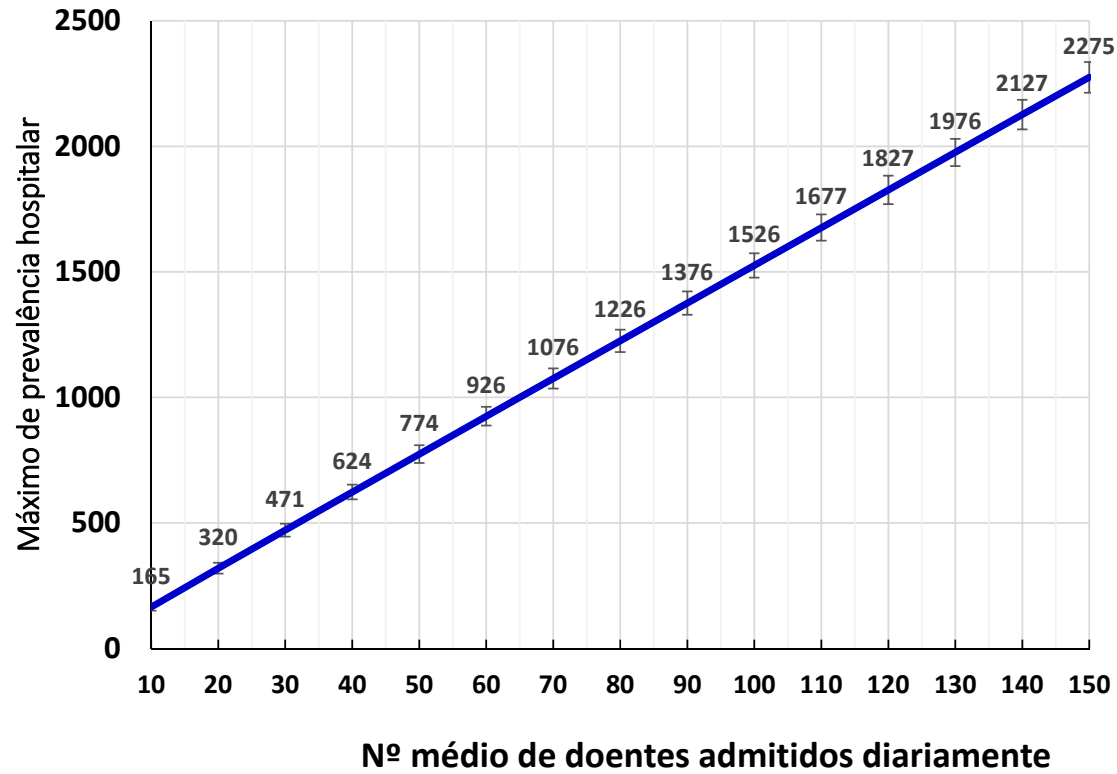
Grato pela atenção

João José F. Gomes  
Manuel Carmo Gomes

Epidemiologia  
Faculdade de Ciências, Univ Lisboa



Prevalência hospitalar esperada (eixo yy) para diferentes fluxos constantes de entrada de doentes (eixo xx)



## Mediana do tempo de hospitalização ao longo do tempo e em função do tamanho da amostra

